

Accentuate Heritage Open Day's Access Forum's general Access Toolkits and other resources/useful links

The following is a list of some useful access toolkits, websites and other publications which are available. Also, do take a look at our Accentuate Heritage resources online at www.accentuateuk.org/accentuate-heritage

ISAN Access Toolkit

www.isanuk.org/publications-downloads/downloads

Through *Attitude is Everything*, ISAN has produced a comprehensive access toolkit specifically for outdoor events which includes tips for working with disabled artists.

Voluntary Arts Network

www.voluntaryarts.org

VAN produces succinct and relevant briefing documents on a range of topics including 'Access: Good access makes life easier for everyone'.

Change Picture Banks

www.changepeople.co.uk

These CD-ROMs, produced by a leading national organisation run by and for people with learning difficulties, contain pictures which help to make information more accessible to people with learning difficulties.

Centre for Accessible Environments (CAE) Access Resources

www.cae.org.uk

CAE has produced a range of publications, including design guides, specifiers' handbooks and CD-ROMs related to access to the built environment.

National Organisations

The Access Association

www.accessassociation.org.uk

The work of the Access Association includes supporting people working in access and disability fields, as well as promoting the appointment of Access professionals and the development and training of Access professionals and volunteers, and seeking to ensure consistency in practice and standards.

Accessible Countryside for Everyone

www.accessiblecountryside.org.uk

As well as providing a website resource that gives information on places, walks and recreational opportunities with disabled access for each of the counties of England and Wales, ACE promotes disabled access in the countryside and the wider publication of accessible information in general.



Accentuate HOD's Access Forum's general Access Toolkits and other resources/useful links continued

The Sensory Trust

www.sensorytrust.org.uk

Makes places accessible for everyone.

Access Group Resources

www.accessgroupresources.co.uk

Access Group Resources is the information and networking website for local access groups. Its aim is to develop the capacity of local access groups – and other disabled people's organisations involved with promoting accessibility – across England and Wales. The website aims to help groups link up with each other to share issues, stimulate discussion and develop good practice approaches to accessibility and inclusive design.

Deafblind UK

www.deafblind.org

Deafblind UK provides a range of services to assist deafblind people, their support assistants and other professionals. These include training in communication and rehabilitation skills, a free 24 hour helpline, a regional network of staff and volunteers, a varied leisure programme and a range of publications in different formats.

Joint Committee on Mobility of Blind and Partially Sighted People

www.jcmbps.org.uk

The JCMBPS is an independent body consisting of representatives from the principle organisations of blind, deafblind and partially sighted people, with a specific interest in access and mobility. Secretariat for JCMBPS is provided by Guide Dogs for the Blind Association (Guide Dogs).

Royal National Institute of Blind People (RNIB)

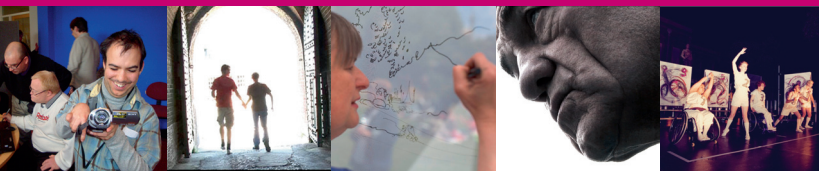
www.rnib.org.uk

RNIB provides a wide range of products and services related to supporting people with sight loss, their families and friends, as well as employers and service providers. They also have case studies of museums and galleries that are making their services more accessible.

Royal National Institute of the Deaf (RNID)

www.rnid.org.uk

RNID works to improve the lives of deaf and hard of hearing people, by providing a range of services, campaigning and lobbying, raising awareness of deafness and hearing loss and through social, medical and technical research.



Accentuate HOD's Access Forum's general Access Toolkits and other resources/useful links continued

National Register of Access Consultants (NRAC)

www.nrac.org.uk

The NRAC is an independent register of accredited Access Auditors and Access Consultants who meet professional standards and criteria established by a peer review system. It is a UK-wide accreditation service for individuals who undertake access auditing and access consultancy.

Association of Sign Language interpreters

www.asli.org.uk

Membership association with directory of SLI's in England, Wales and Northern Ireland

Vocaleyes

www.vocaleyes.co.uk

A national audio description service providing access for blind and partially sighted people

Museum and Heritage Sector Resources

Heritage Open Days

www.heritageopendays.org.uk

For advice and support on all areas of running your HODs event.

English Heritage

www.english-heritage.org.uk/discover/people-and-places/disability-history

English Heritage have also launched a fantastic resource called Disability in Time and Place which documents the history of disability across the ages and links to some extremely interesting buildings.

Disability History Month

<http://ukdisabilityhistorymonth.com>

An annual celebration of disability history 22 November to 22 December

Disability Arts Online

www.disabilityartsonline.org.uk

A vibrant and ever changing online journal and discussion forum with many features from disabled and Deaf writers, blogs articles and opportunities for listings.

National disability arts collection and archive

www.ndaca.org

Managed by NDACA Coop



Accentuate HOD's Access Forum's general Access Toolkits and other resources/useful links continued

Engaging Places

www.engagingplaces.org.uk

A web resource with lots of teaching resources linked to different architecture includes heritage sites of interest

The Museum Association

www.museumsassociation.org

Lots of useful information online, particularly in their Museums Practice section. Some elements may only be available to members.

Group for Gallery Education (GEM)

www.gem.org.uk

Promotes education and access as a core function of museums. Membership gives you access to a useful network of people working in this field.

Engage

www.engage.org

National association for gallery education. Works in the UK and internationally to promote understanding and enjoyment of the visual arts.

Arts Council England

www.artscouncil.org.uk

Arts Council now includes support and development of museums in its remit. Offers a range of funding streams.

Heritage Lottery fund

www.hlf.org.uk

The key funder for all size of heritage projects. The website contains advice on funding, but also useful guidance on subjects such as audience development.

Some Deaf history initiatives

www.deafhistoryscotland.org.uk

www.sussexdeafhistory.org.uk

British Deaf History Society

www.bdhs.org.uk